

Carbofibre Isolation Base

- Carbon fiber laden, honeycomb core greatly improves sound quality
- Extreme torsional rigidity and controlled resonance damping and dissipation
- Height adjustable stainless steel feet
- Precision level for easy leveling of isolation base
- Single layer isolation base designed for lightweight to middleweight components
- Double layer 'Heavy Duty' isolation base designed for lightweight to heavyweight components

Isolation Base

CF01 17.7" x 15.8" x 0.9" (450 x 400 x 23 mm)
 CF02 19.7" x 18.7" x 0.9" (500 x 475 x 23 mm)

MAP

\$1,500
\$1,500

Heavy Duty Isolation Base

CFHD01 17.7" x 15.8" x 1.8" (450 x 400 x 45 mm)
 CFHD02 19.7" x 18.7" x 1.8" (500 x 475 x 45 mm)

\$2,000
\$2,000

Rack Shelf (Retrofit for Pagode)

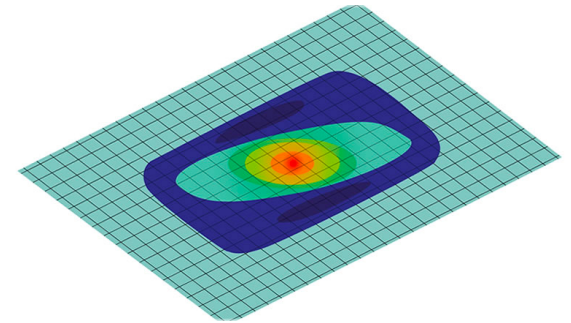
CF600
 CF750

\$1,400
\$1,700

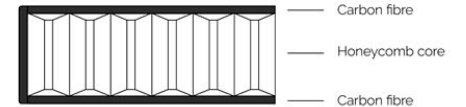
Rack Shelf (As Option for Pagode)

CF600opt
 CF750opt

\$800
\$1,000



Carbofibre resonance chart



Carbon fibre edge

Carbofibre build